



LIVING ROOM



MASTER BEDROOM

Indulge in the Highest Form of Luxury Every Day.

A rare gem of a home for the discerning few, only 22 of these exquisite creations will be available. It is, perhaps, time to move up, to Hinai Heights.

FEATURES:



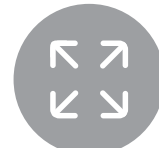
22 Exclusive units



Freehold with Strata Title



Strategic Location



Spacious units from 2850 sqft



11 units with private lift & lobby



Wet and Dry Kitchen Cabinets



Washer & Dryer



Complete with Air-conditioning



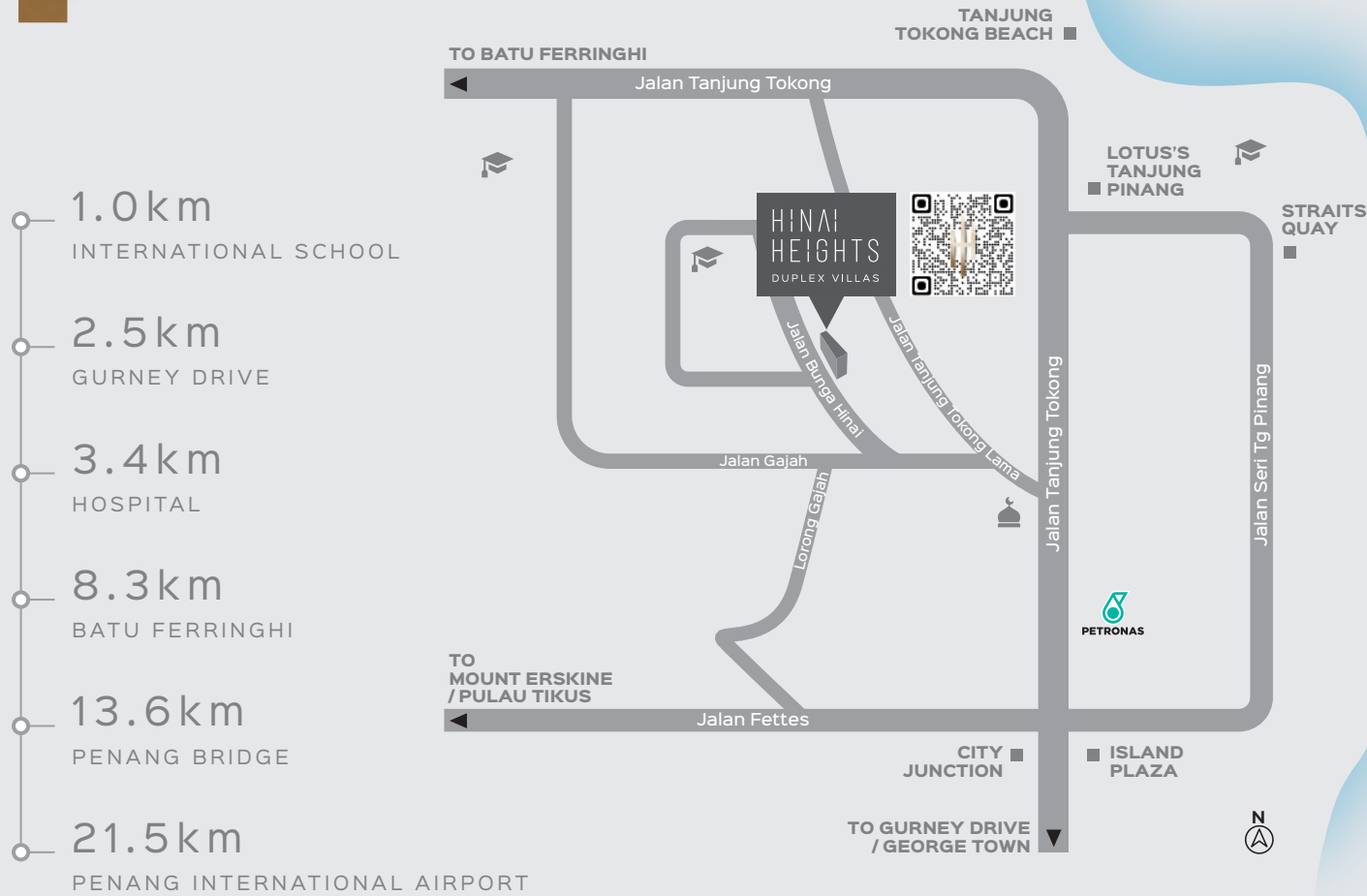
Security Alarm System



Private Parking Lots

First-Class Address in an Elite Location.

Situated in an established area of Tanjung Bungah, Penang, Hinai Heights keeps you close to a host of international schools and amenities for your every need. Be part of an exclusive community connected to it all.



www.hinaiheights.com

HINAI HEIGHTS DUPLEX VILLAS

CONNECT WITH US TODAY

+604-262 2535
+6016-336 2535
enquiries@urbanhue.com.my

Urbanhue Development Sdn Bhd

13, 07 13th Floor Plaza MWE
No. 8 Lebuhr Farquhar
10200 Pulau Pinang

OFFICE HOURS

Monday - Thursday 9am - 6pm
Friday 9am - 3pm

UrbanHue Development Sdn Bhd (1147550-W) | Unit 13.07, 13th Floor Plaza MWE, No.8 Lebuhr Farquhar, 10200 Georgetown, Pulau Pinang. | Tel: +604-262 2535 | Fax: +604-263 2535
| Website: urbanhue.com.my | Email: enquiries@urbanhue.com.my • Building Plan Reference No: MBPPIOSC/PB10682/18(LB) • Project Name: Hinai Heights • Expected Date of Completion: Dec 2023 • Total Unit: 22 • Build-Then-Sell Scheme • Built-up: Approximately 2850sf to 3,989sf • Type of property: Townhouse • Car park spaces per unit: 2 • Approving Authority: Majlis Bandaraya Pulau Pinang • Land Tenure: Freehold • Land Encumbrances: None

Disclaimer: The information, images, illustrations, etc. contained herein ("Information") are intended to provide a general introduction only to the proposed development and should by no means be taken as part of any sale and purchase or ancillary agreements or representation/warranty of sorts of the end product, implied or otherwise. All information is subject to change without notice. Images and illustrations are artists' impressions only.

FOR INTERNAL USE ONLY



HINAI HEIGHTS
DUPLEX VILLAS

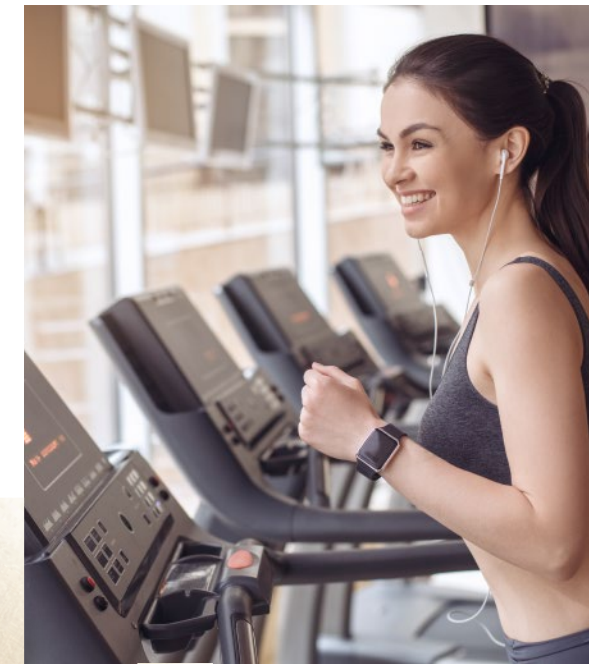


It's Time to Live
the High Life.



OPEN CONCEPT FOR VERSATILE LIVING

Located in one of Penang's most sought-after neighbourhoods and elevated 20 metres above sea level, Hinai Heights offers serenity and privacy. It is poised to usher in a whole new level of exceptional living.



YOGA PLATFORM



GYMNASIUM



INFINITY POOL

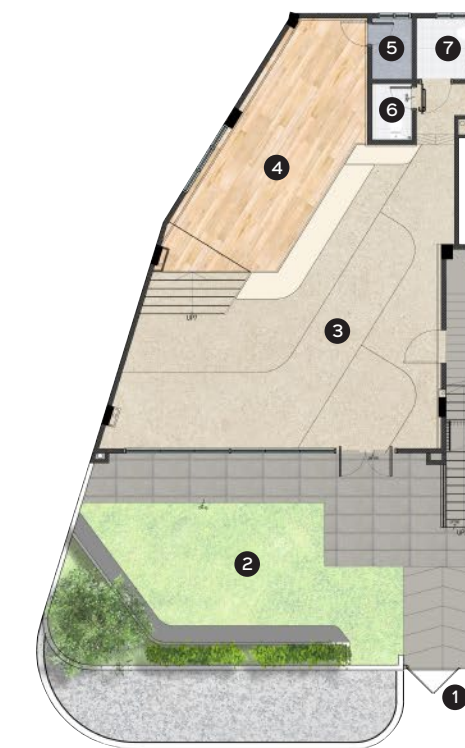
Own What You See -
An Exclusive Home
Through Our
Build-Then-Sell Scheme.

Lead an Active and Joyous Lifestyle Filled with Leisurely Pursuits.

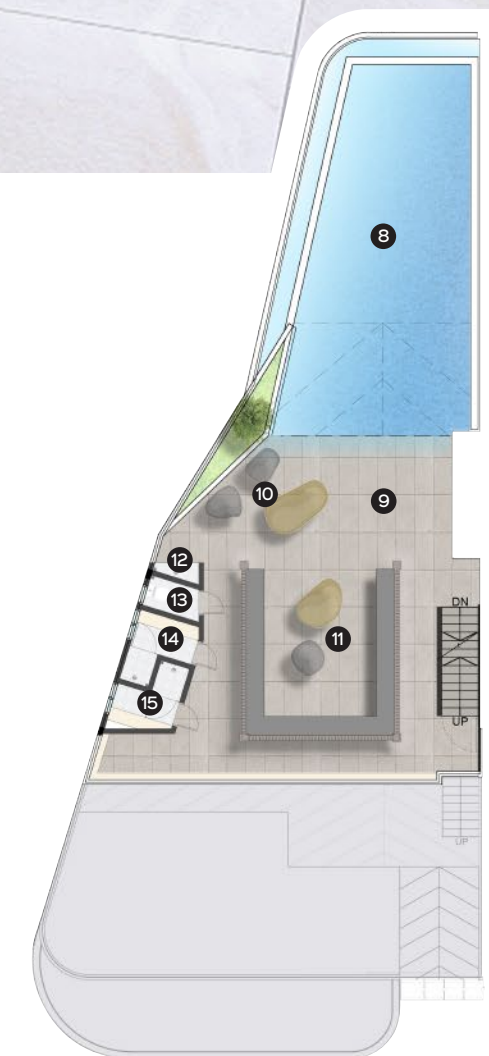
Refresh, relax and rejuvenate your senses with Hinai Heights' spread of facilities comprising the gym, yoga platform, infinity swimming pool and many more. They boast a contemporary look and a spacious feel, thereby making for the ultimate immersive break where your well-being takes precedence.

FACILITIES

- 1 MAIN ENTRANCE
- 2 GARDEN
- 3 GYMNASIUM
- 4 YOGA PLATFORM
- 5 STORAGE
- 6 LAVATORY
- 7 DISABLED LAVATORY
- 8 INFINITY POOL
- 9 POOL DECK
- 10 POOL SIDE LOUNGE
- 11 CABANA
- 12 POOL SHOWER
- 13 LAVATORY
- 14 MALE CHANGING ROOM
- 15 FEMALE CHANGING ROOM



GROUND FLOOR PLAN



FIRST FLOOR PLAN